



# **Mining Processing**

## **Crushing - Screening - Enriching,**

2024

IMMA Global has a unique crushing and screening solution to obtain best in the class quarry and pits with maximized optimum solutions.

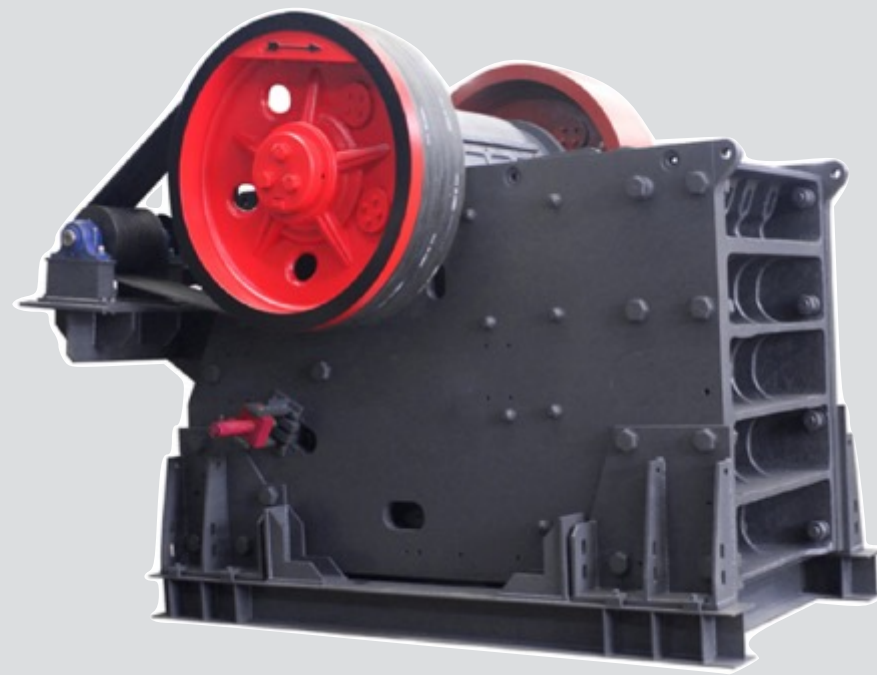
IMMA supplies primary, secondary and tertiary crushers by cooperation of global crusher manufacturers as Metso™, Sandvik™ and/or worldwide OEM suppliers, to enable a high professional and competitive plant with own EPC, engineering, design, manufacturing and operation abilities to fulfill the range. In addition to micronized and regular screens, conveyor belts, washer, hopper, rock drill, etc. IMMA obtain a full range for a single-source turn key solutions.

- \* Aggregate
- \* Ore Processing
- \* Mineral Enrichment



## Jaw Crusher

Up to 1200 tph | 450mm to 1200 mm



## Cone Crusher

Up to 780 tph | 10mm to 350mm



## Vertical Shaft Impact Crusher

Up to 750 tph | 45mm to 80mm



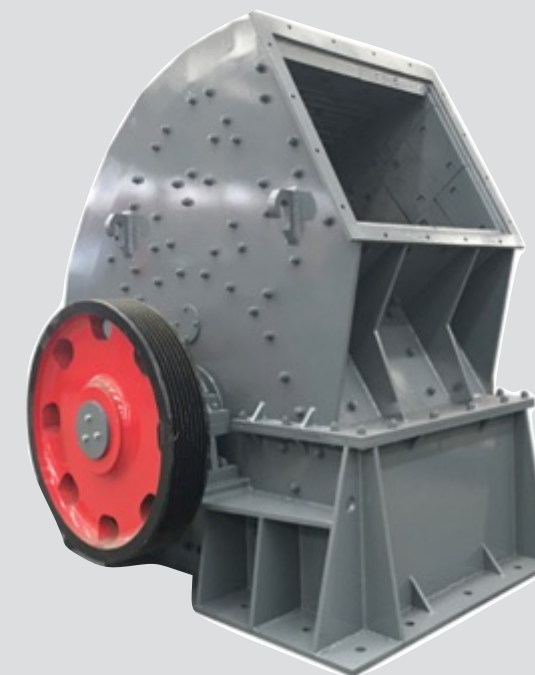
## Hydraulic Impact Crusher

Up to 1000 tph | Up 1200mm



## Hammer Crusher

Up to 1500 tph



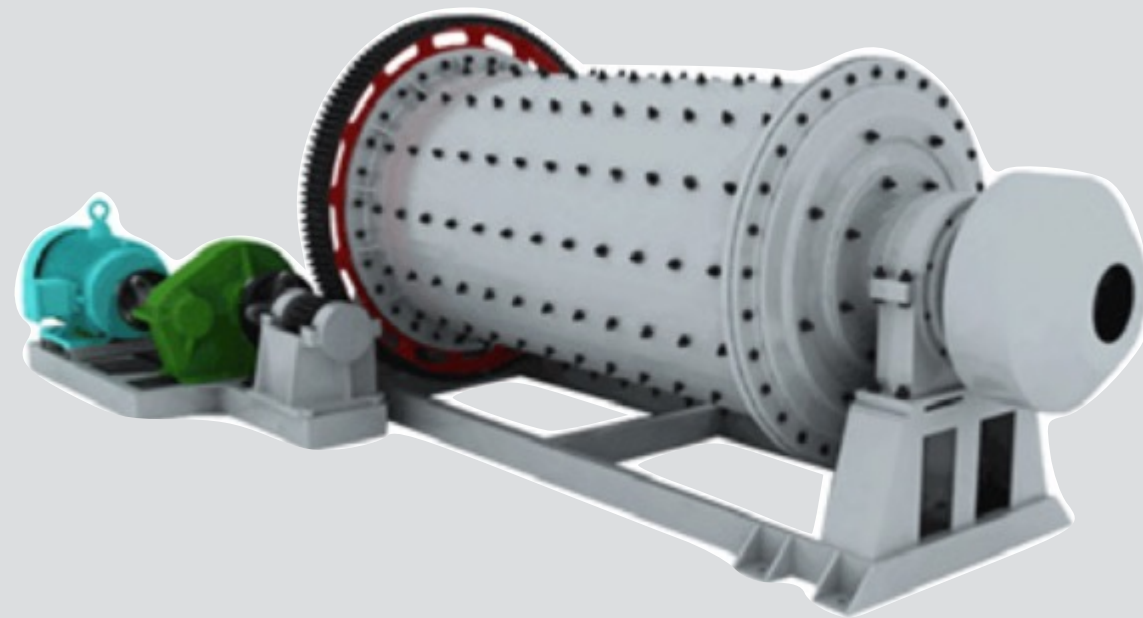
## Double Roll Crusher

Up to 3.000 tph



## Ball Mill

Up to 90 tph | 25 mm feed size



## Vibrating Screen

Up to 3.000 x 7.500mm | 4 Decks



## Trommel

Up to D:2200xL:8.000mm | 850 tph



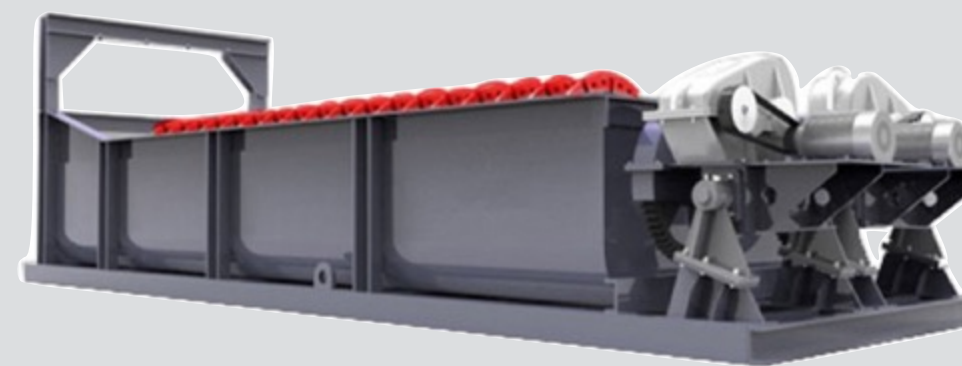
## Conveyors

Up to 1000 tph | Up 1200mm



## Washers

Screw & Bucket | Up to 450 tph



## Dry Screens



**VCR D-1530/11206**  
S:1.500x3.000mm/D:3,/  
M:10 /U:6



**VCR D-1540/21206**  
S:1.500x4.000mm/D:2,/  
M:12 /U:6



**VCR D-1560/32010**  
S:1.500x6.000mm/D:3,/  
M:20 /U:10



**VCR D-1530/22412**  
S:1.500x3.000mm/D:2,/  
M:24 /U:12



**VCR D-1550/42814**  
S:1.500x5.000mm/D:4,/  
M:28 /U:14

## Wet Screens



**VCR W1530/21206**  
S:1.500x3.000mm/D:2,/  
M:12 /U:6



**VCR W-1540/21206**  
S:1.500x4.000mm/D:2,/  
M:12 /U:6



**VCR W-1560/32412**  
S:1.500x6.000mm/D:3,/  
M:24 /U:12

## Zig Zag Screens



**VCR D-1530/32814**  
S:1.500x3.000mm/D:3,/M:  
28 /U:14



**VCR D-1540/64420**  
S:1.500x4.000mm/D:6,/M:  
44 /U:20

## Dewatering



**VCR S-1530/20204**  
**Dewatering**  
S:1.500x3.000mm/D:2,/M:  
2 /U:4

- \* Best in the class for process and enrichment solutions
- \* Highest efficiency and productivity
- \* Enrichment process from 1mm to 45 micron
- \* Unique solutions for:
  - Aggregate
  - Gypsum
  - Construction
  - Aluminum
  - Chemicals
  - Calcite
  - Moist Clay
  - Olivine
  - Emery and Silica
  - Zeolite
  - Sand
  - Magnesite
  - Perlite
  - Bentonite
  - Limestone
  - Pomice



## **ONE-SOURCE in-house Solutions:**

- Heavy Equipment (Including Excavators, Loaders, ...)
- Mining Equipment for Open pit and Underground
- On-road & Off-road Trucks
- Underground Trucks
- Drilling Rigs
- Pumps
- Generators
- Cranes
- Base Camps
- Project Management
- Plant & Facility Operation



## **Some of the brands we Cooperate:**



*\* The registered brands and copyrights owned by esteemed manufacturers.*



**IMMA Global Technick S.A.**

HQ - Turkiye: Barbaros Bulvari,, 102/5, Zincirlikuyu, 34340 Istanbul

F&W: Free Port & Zone, Serbest Liman Cad. No: 1379, Gazimagusa, 99450, Mersin, Turkiye

Drève de l'Infante 27A5, 1410 Waterloo- Belgique

1910 Cochran Rd, Pittsburgh, PA, 15220, USA

T: +90 212 337 36 57

F: +90 212 337 36 10

E [info@immaglobal.com](mailto:info@immaglobal.com)

W: [www.immaglobal.com](http://www.immaglobal.com)