



# FLATPACK CONTAINERS

2022



# IMMA FPC

## CONTAINERIZED SOLUTIONS

IMMA designs and manufactures flatpack containers for a wide range of solutions:

- \* Any purpose for temporary and /or permanent projects
- \* Easy assemble, reassemble and transport
- \* Wide range of usage from VIP cabins to refugee camps
- \* Fully furnished
- \* Any customized supplies including offshore, on-trailer, armored, etc.
- \* Long lived solid structure
- \* Comfortable habitation and storage
- \* Healthy accommodation environment



Flatpack containers obtain quick and easy to store / install / assemble / move solutions.

Major standard specification can be listed as follows::

- The certified and EU-approved materials
- Excellent thermal insulation on joints and panels with high density polyurethane core
- Non-flammable and environmental friendly materials
- Heat and sound insulated windows and doors
- Resist against desert sand, humidity, arctic and tropical environment
- Heavy-duty structure for multi stored construction
- Long life time in terms of assembling and disassembling
- Solid structure to move the assembled units from site to site
- Minimized transporting cost and efforts
- Minimized construction waste and investment before assembling and setup
- Low costed infrastructure and basement requirement
- Quick and easy settlement at site
- Provides high and quality living & usage standards



## APPLICATIONS



Base Camps



Accommodation



Shops



Kitchen



Cold Room



On-wheel / Trailer Container



Armored



Security Cabins



Warehouse / Storage



Sanitary / WC



Laboratory

With the following standard specs:

- Standard 20' with 2.438x 6.058 x 2591 mm (WxLxH) with any custom size
- 2mm structural steel with electrostatic powder coated
- 230 - 400W / 32A / 5 poles (with EU, USA, UK or any local regulations & plugging)
- 50 mm PU sandwich panel walls
- 910x 2010 mm with PVC joinery & Insulated with sandwich panel doors
- 700 x 1.100 mm, uPVC, double glazing windows with optionally roller shutters
- 80 mm glass wool + 40 mm PU panel ceiling
- 16 mm fiber cement board flooring covered by 2 mm PVC vinyl
- EU normed WC, shower, bathroom facilities
- Assembling to be done by 2 labors in 90 mins maximum
- Fully furnished 6 units of IMMA FPC can be shipped by 1 x 40'HC
- Standardized as per ISO 9001- 2008 ,TSE, OHSAS and CE

## BASIC INSTALLATION



Unload the container



Locate the FPC pack



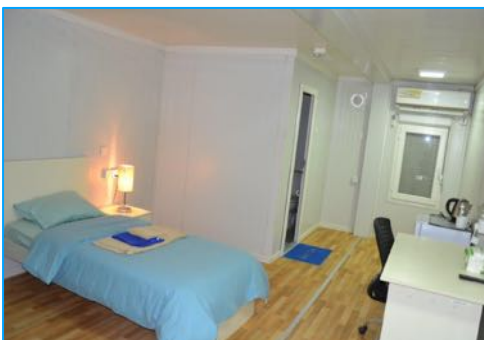
Separate the ceiling



Locate the beams



Mount the walls



Done!

## **IMMA Global Technick S.A.**

Barbaros Bulv., 102/5, Zincirlikuyu, 34340 Istanbul, Turkiye

Drève de l'Infante 27A5, 1410 Waterloo- Belgique

Tel: +90 212 337 36 57

Fax: +90 212 337 36 10

E-mail: [info@immaglobal.com](mailto:info@immaglobal.com)

Web: [www.immaglobal.com](http://www.immaglobal.com)